

Forest Dependency in Rural Georgia

(Based on results of the study in Akhaltsikhe, Akhalkalaki, Chokhatauri and Tianeti regions)



Giorgi Teliashvili
Sumforest school 2017

General Information

The total area of land covered by forests is approximately 2.8 million hectares, - 40% of the country's territory. The total timber resources in the Georgian forest are estimated at 451.7 million cubic meters. 97% (2915.8 hectares) of the forests in Georgian are located on mountain slopes, the remaining 3% are low-lying and flood plain forests.

Research objectives and methodology

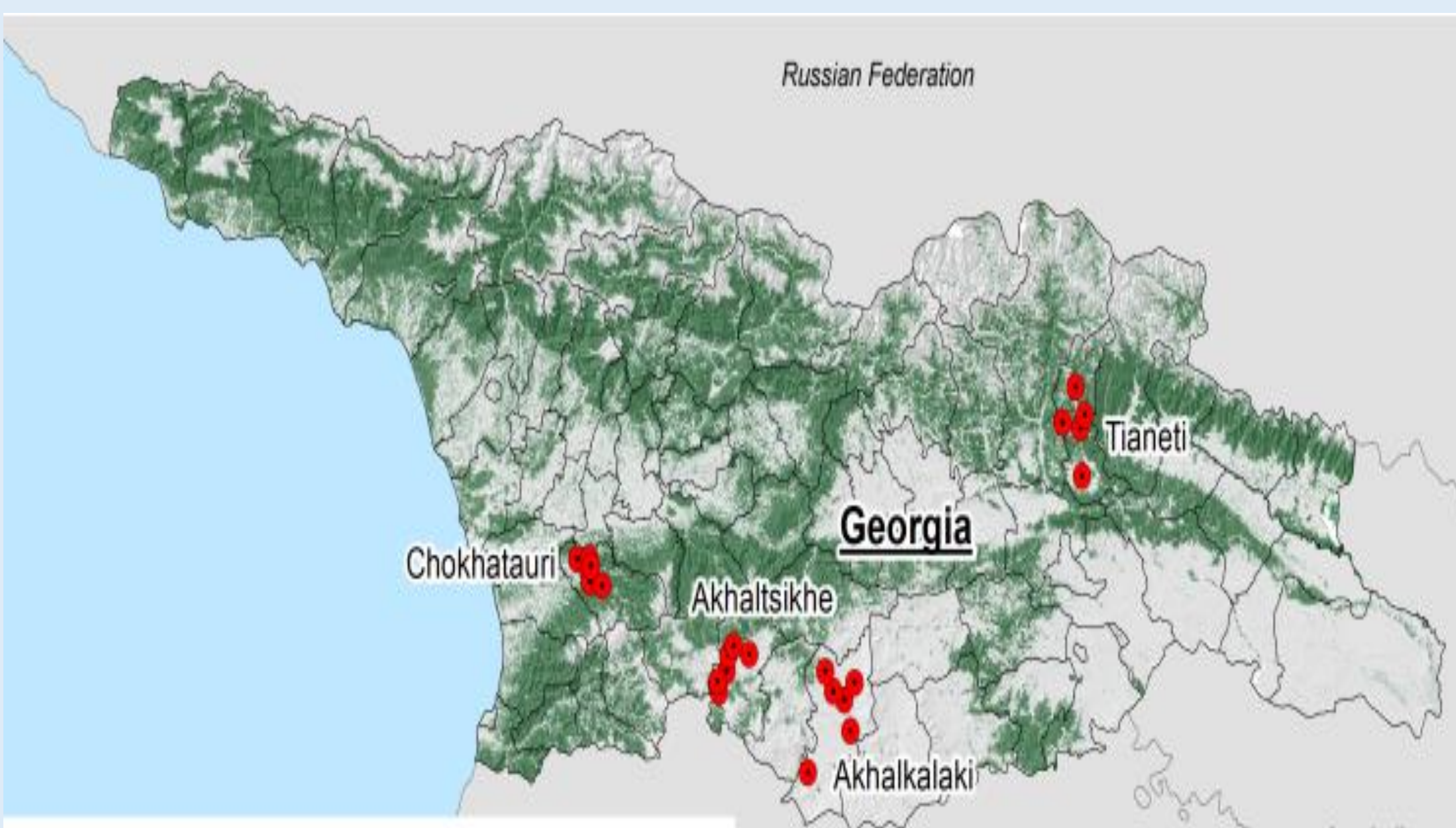
Objectives:

- Document factors and reasons that may determine sustainability between communities and their forest base;
- Determine the main consumption purpose of Forest resources by regions;
- Provide quantifiable information for decision makers to improve governance;

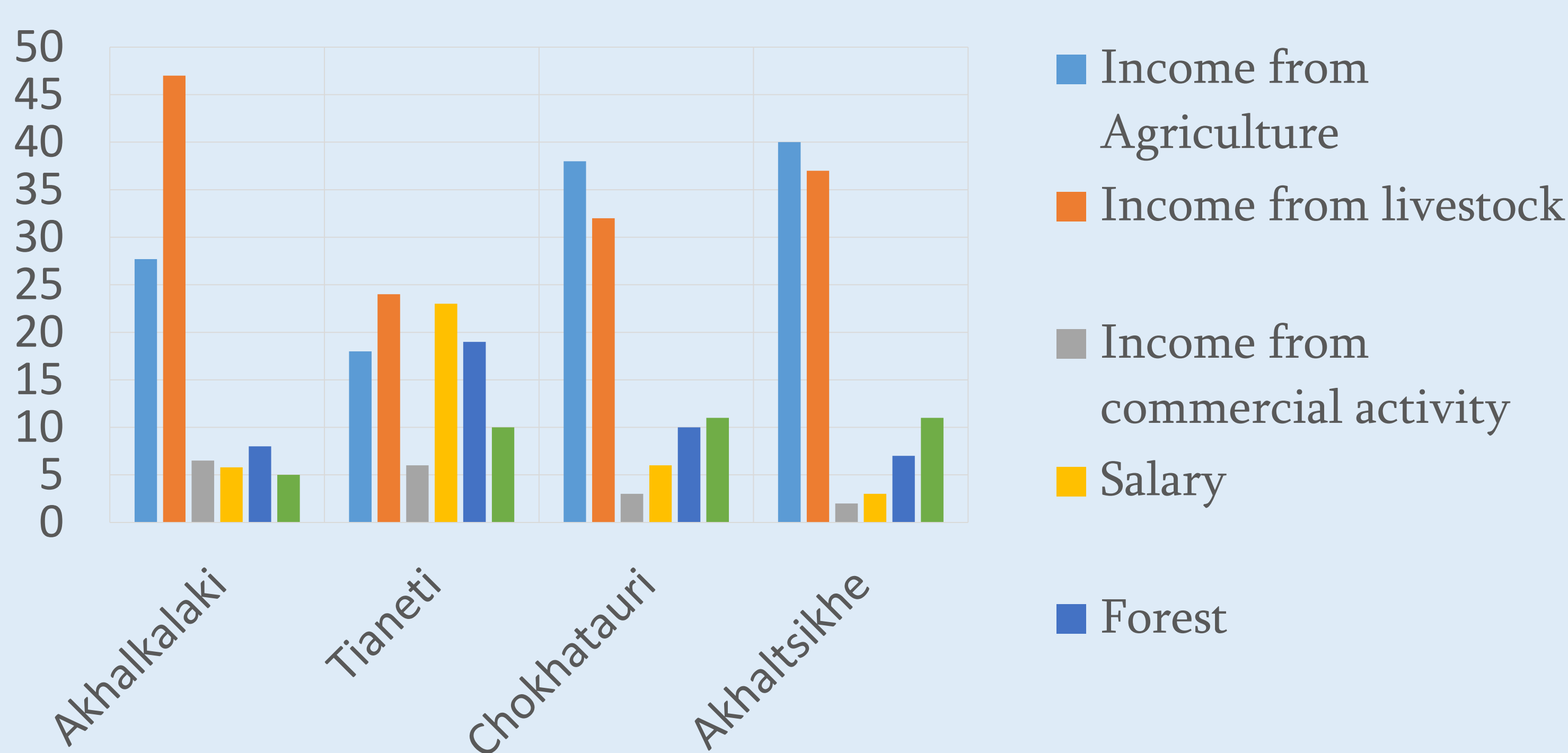
Methodology:

- Desk research - All potential secondary information about villages, disasters, infrastructure and forests was obtained from various official websites

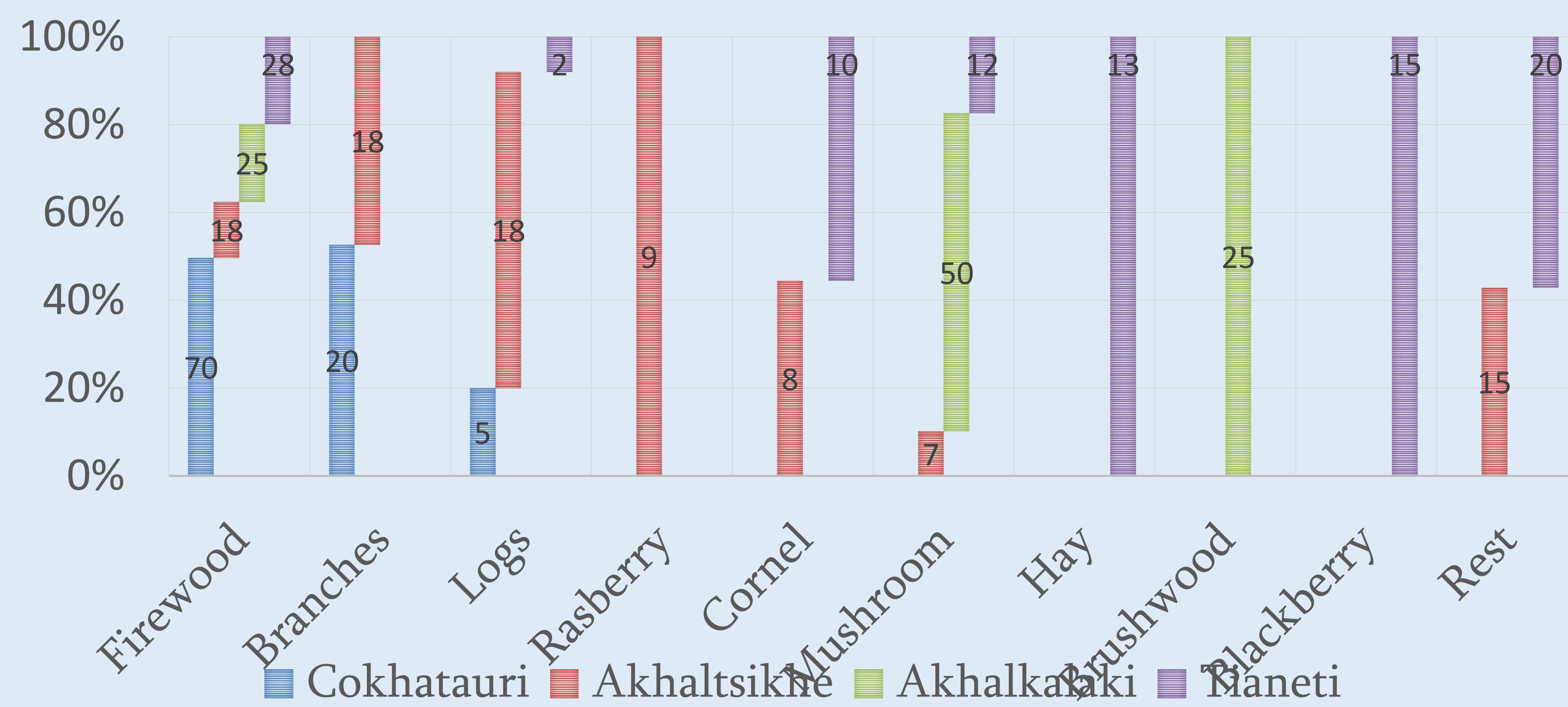
Research area



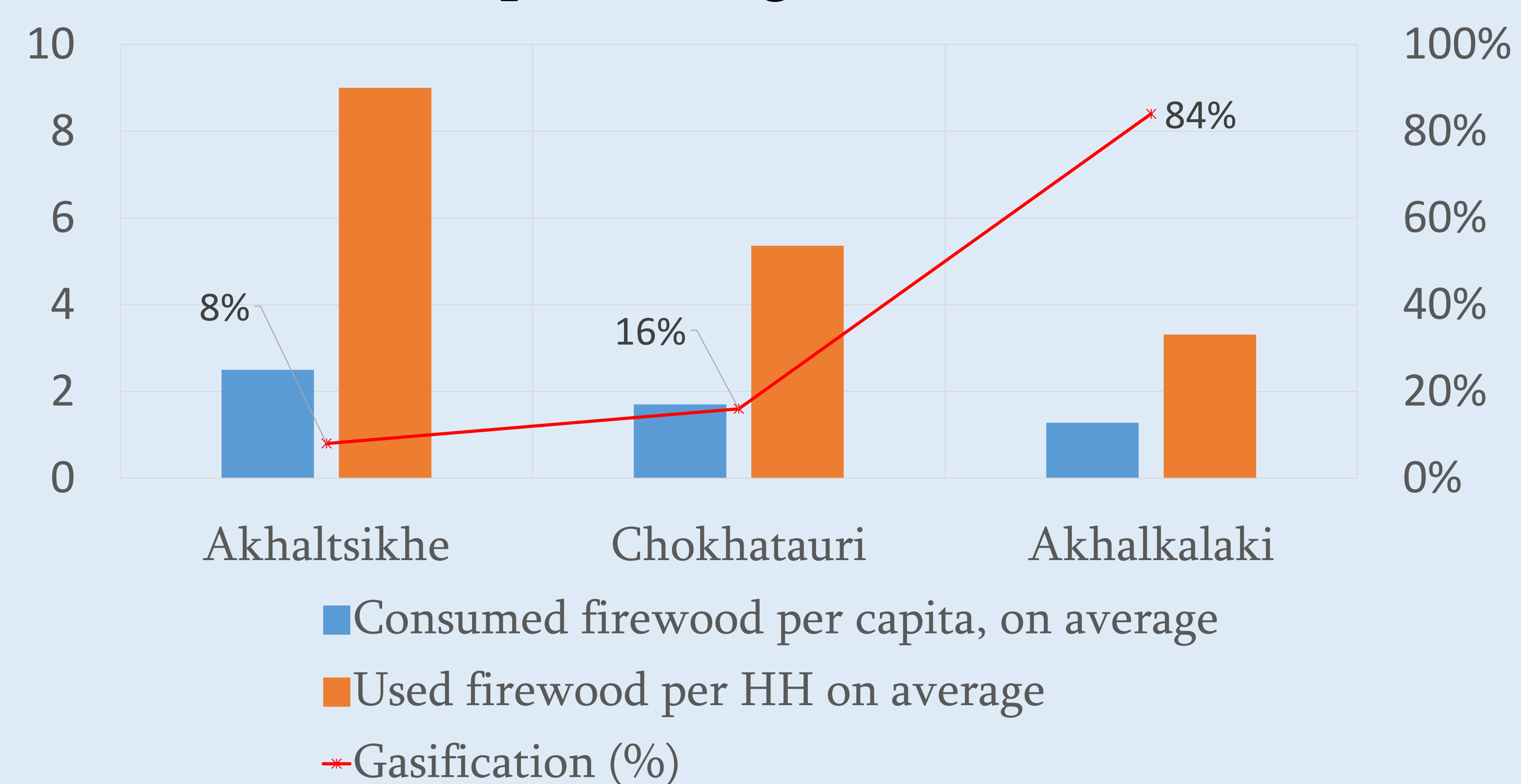
Source of income by target municipalities



Gathered forest product by municipalities (%)



Firewood consumption and gasification rates



Findings

The population in Akhaltsikhe, Chokhatauri and Tianeti municipalities are dependent on timber resources. Because there is limited access to a gas supply, firewood is the main product used for heating and meeting household needs. So during Emergency situations like, natural disasters, wildfires, early winter people living in these areas become vulnerable to cold and harsh climate and the risk of unsustainable consumption arises.

Conclusion

Gasification processes have not been implemented and/or completed in all target areas, therefore, there are not alternative sources of energy at this point and firewood remains the main resource for heating and cooking.

References

- The world bank (WWF; IUCN);
- UN FAO (Forestry in Georgia)
- National statistics office of Georgia